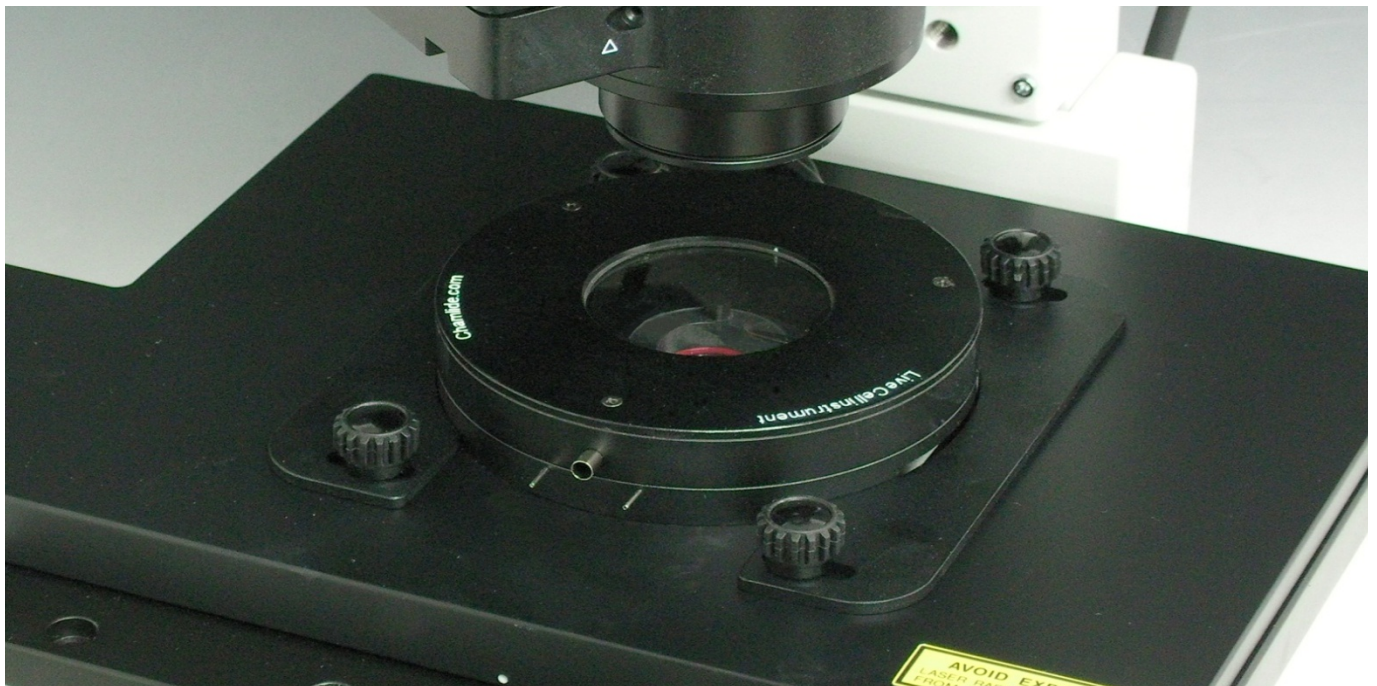
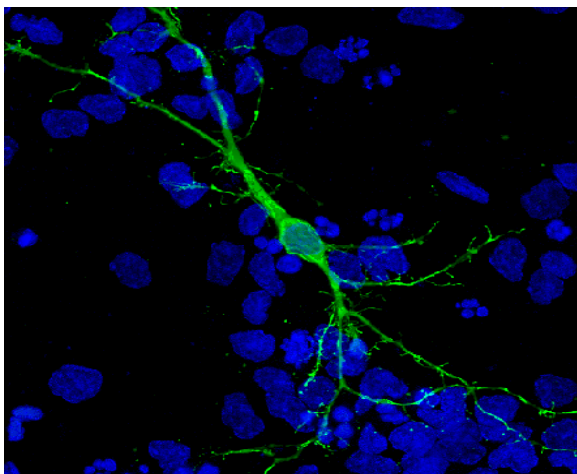


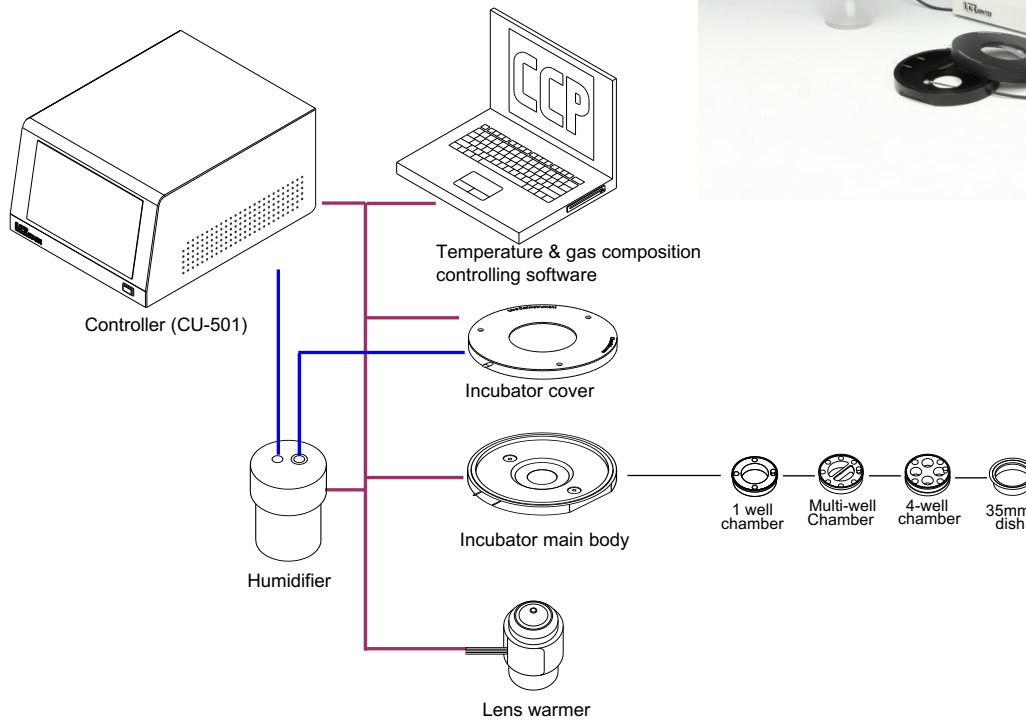
Chamlide IC

Incubator System for Commercial 35mm Dishes & Chamlide chambers



- Designed to fit microscope stages with a round hole to insert (e.g. Olympus (110 mm) and Nikon (108 mm) standard manual stages).
- CU-501 controls the temperature of the incubator main body, incubator cover, humidifier, and lens warmer and adjust the flow rate of the mixed CO₂ gas with a flow meter.
- Incubator cover is made of clear glass which is coated with the heating element.
- FC-5N or FC-9 provide optimum mixed gas to all incubator systems (e.g. Chamlide TC, WP, and IC).
- Usable with various Chamlide chambers or consumable 35mm culture dishes
- Special glass cover for disposable 35mm dishes to maintain humidity and provide excellent transmission for imaging
- Able to control temperature and gas concentration, and to program the temperature and gas concentration gradients
- Able to record the temperature and gas concentration over time with CCP ver.7 software or MetaMorph software
- Available with in/out ports for perfusion or injection of liquids or drugs without opening the incubator cover. (with CM-B-PA, CM-B-PB, see page 42)





Specifications

Temperature range	Ambient +3°C ~ +45°C
Recommended 5% CO ₂ /95% air flow rate	100 ml /min
Incubator physical dimension (mm)	Cover 110ø x 12 Main body 110ø x 15 (for Olympus) 108ø x 15 (for Nikon)
Heating method	Cover invisible coating heater Main body thin layer heater Humidifier cartridge heater Lens warmer thin layer heater
Sensor	PT 100 ohm
Incubator material	Black anodized aluminum alloy

Model No.

IC-L-10

Product

Chamlide IC